



*AD* **AD** **ENTERPRISES**

INDOOR & OUTDOOR ADVERTISING

The logo for AD Enterprises, featuring the letters 'AD' in a large, blue, serif font.

**ENTERPRISES**

# WELCOME MESSAGE

*“Passion is Priceless”*

At AD ENTERPRISES, We believe that great passion can make the impossible happen. Each day is new and so are challenges. But excellence is what we strive for and conviction is what we stand by. Our mission is to Learn and grow with experience, Innovate generously and Work diligently.

# Company Journey

## FOUNDER



### ABHINEET RAJ

Abhineet is an Engineer by profession and an advertisement designer by passion. He hails from Patna, Bihar and saw the issues plaguing the advertisement system of Bihar. To solve the problems faced by all big players, he started working in the field from 2014 and started AD Enterprises in year 2017. Today the firm is handling more than 15 premium clients and have operations in complete Bihar and Jharkhand.

## Launch

---

2014

**AD Enterprises**, is founded and Managed by **ABHINEET RAJ**. Started in Patna as an Advertising Agency In Patna (Bihar).

## Growth

---

2017

Wall Painting, Flex Board, Banner, Glowsign board, Wall-wrap, Inshop Branding and got enrolled as a registered agency for some of the leading brands like Supreme, Sonata, Fast track, hindware, Crompton, Cera etc.

## New Location

---

**Ad Enterprises**, Started New Branch Office in Ranchi.

# Values



## COMMITMENT

Delivering services with passion.



## QUALITY

The promise and trust to give the best.



## INTEGRITY

Value and Respect our relationship with clients

# Services

---

**WE AIM TO  
DELIVER  
ONLY THE BEST**

## Indor

We have experience in designing and developing complete indoor setup of Shops, Flats and Offices.

## Outdoor

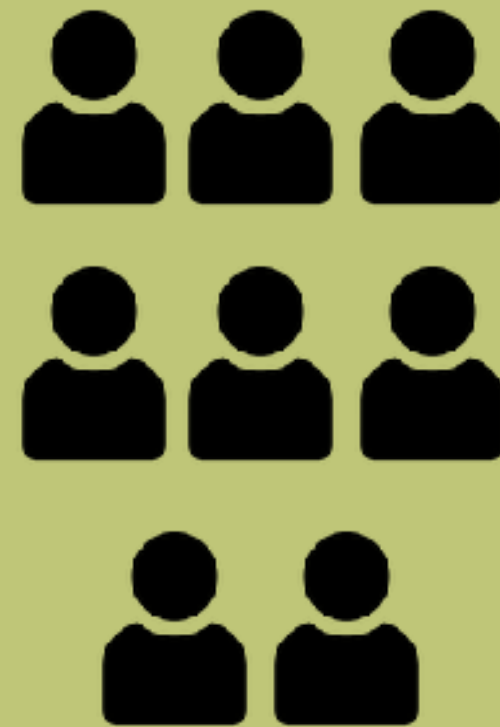
Our outdoor project includes billboards, flex boards, standees and anything you need.

# Team Strength

## PATNA



## RANCHI



Till Now Our Staff Strength is sufficient But it exceeded as Per Project Load or Company Requirement

# WORK PORTFOLIO

# Showroom Design



# Product Display



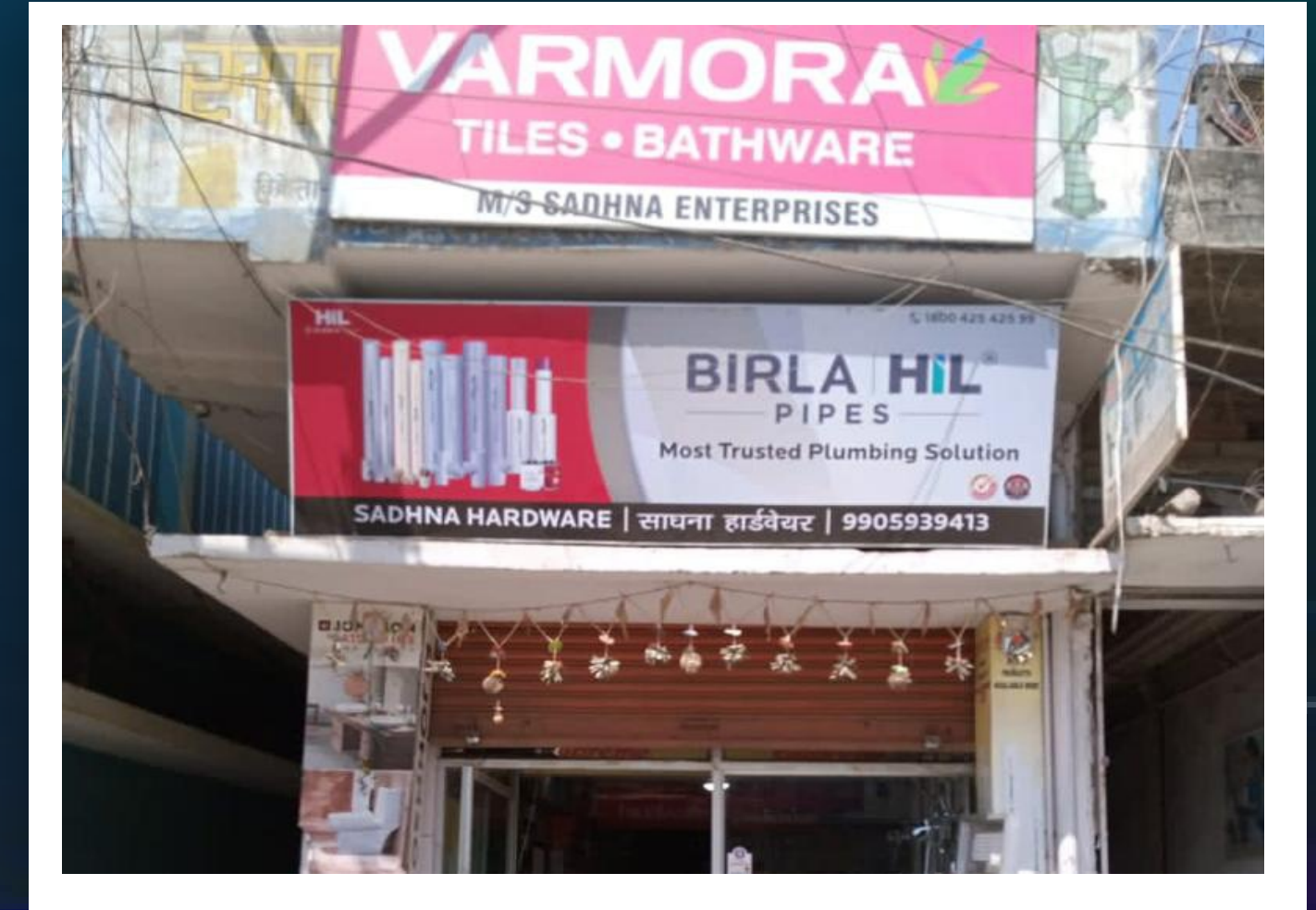
# Panel Display



# Flex Board



# Glow Sign Board



# Inshop Branding with Sunboard (Vinyl Pasting)





# Our Printing Machine

( Solvent & Eco Solvent )



**Konica 512i Solvent Printer**



**Eco Solvent dx5 Head Printer**



**Konica 512i Solvent Printer**



**Eco Solvent dx5 Head Printer**



**Konica 512i Solvent Printer**

# Clients



*AD* **AD** **ENTERPRISES**

**INDOOR & OUTDOOR ADVERTISING**

**PATNA | RANCHI**

HEAD OFFICE: Opposite Aryabhat Knowledge University, New Bengali Tola, Mithapur Bus Stand, Patna, Bihar

BRANCH OFFICE: Booty More, Ranchi, Jharkhand